



---

Bigger Spaces, Better Sunsets

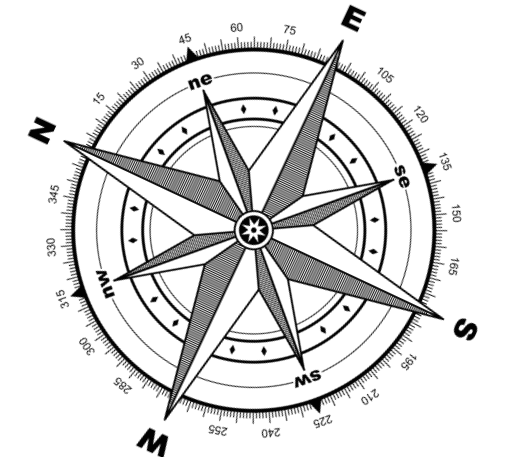
P R E S E N T I N G



# VED Heights

Bigger Spaces, Better Sunsets





## Mountain View

BADLAPUR - PANVEL HIGHWAY

# Serene Living

- 1 Gazebo
- 2 Sitting Zone
- 3 Toddler Play Area
- 4 Indoor Activity Area
- 5 Jogging Track
- 6 Yoga Deck



## Rooftop Amenities



# What We Provide

## Flat Amenities

- Video Door Phone
- Intercom
- WI-FI point provision
- AC point provision in Living Room
- Granite Kitchen Platform with SS Sink and Kitchen Trolley
- Kitchen Service Platform
- Kitchen Tiles upto Beam level above Platform
- Concealed Plumbing with Good Quality Fittings and Sanitary wears
- Concealed Copper Wiring
- Vitrified Flooring Tiles
- Granite Window Frames with Powder Coated Aluminium Sliding Windows
- Adequate Electric Points with Good Quality Switches
- MCB provision with Inverter Point
- Internal Wall finish with Wall Putty along with Good Quality Paint

## Common Amenities

- Elegance Entrance Lobby
- High-speed Elevators with Power Backup
- Advance Fire Fighting System
- CCTV Surveillance in Common Area
- High Street Retail
- External walls Painted with 100% Acrylic Paint
- Adequate Parking Space in Lower Ground
- Society Office
- Indoor Game Room
- AC Fitness Center
- Toddler Play Area
- Senior Citizen Sitting Area
- Gazebo
- Meditation Space



## 1 BHK

Our 1 BHK Designed and Built to help Families grow and Experience the Joy of Living Life to the Fullest

These thoughtfully crafted residences feature spacious layouts, abundant natural light, and private sun decks that offer breathtaking views. Enjoy a seamless blend of nature and modern living, perfect for relaxation and rejuvenation. Ideal for those seeking an elevated lifestyle in a Serene environment.



## 2 BHK

Experience Luxury with our Special Big Sundeck  
2 BHK homes, designed for Comfort and Elegance.



Quality



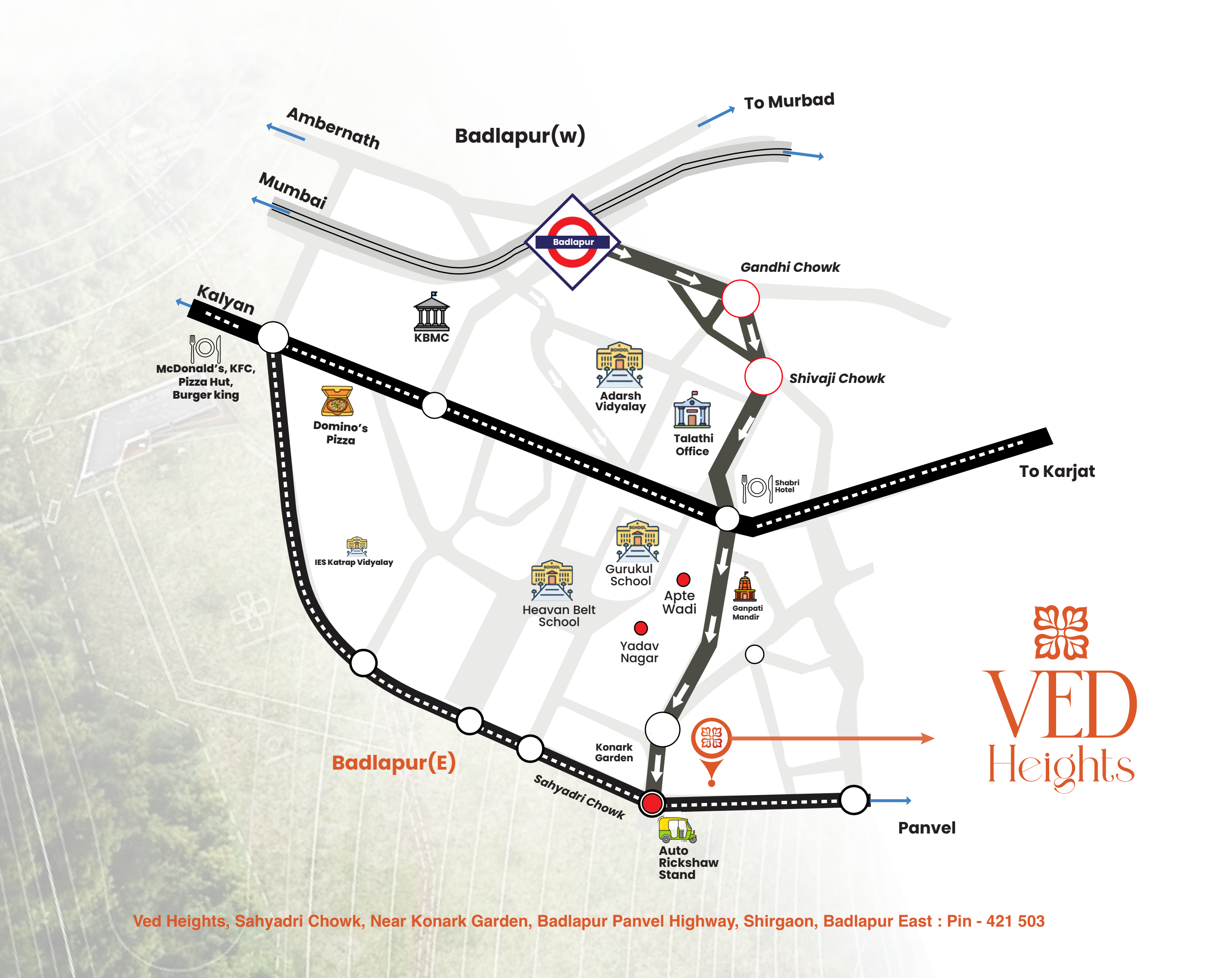
Strategic  
Location



Amenities



Investment  
Opportunity



Ved Heights, Sahyadri Chowk, Near Konark Garden, Badlapur Panvel Highway, Shirgaon, Badlapur East : Pin - 421 503

Connectivity

Educational Centers

- Heaven Bell Convent School 550 Mtrs
- Shree Chaitanya Techno School 850 Mtrs
- IES Katrap Vidyalay 2.1km
- Gurukul School 2.9 km
- Carmel Convent School 3.7km

Restaurants & Hotels

- Shabari Hotel 1.4 Km
- Madhuban Restaurant 2.4 Km
- Burger King 2.5 Km
- McDonalds / KFC / Pizza Hut 2.6 Km
- Domino's Pizza 2.8 Km

Hospital & Health Centre

- Gurudev Multispeciality Hospital 850 Mtrs
- Shreeji Hospital 850 Mtrs
- Seven Palm Hospital 1.3 Km
- Vaishnavi Multispeciality Hospital 1.6 Km
- Dhanvantari Hospital 2.1 Km
- Dr. Agrawal Eye Hospital 2.3 Km

Connectivity & Others

- Medicals 100 Mtrs
- Banks 700 Mtrs
- Badlapur Railway Station 2.5 Km
- Petrol & CNG Pumps 2.8 km
- Chikhlooli Railway Station 3.9km

Shopping & Entertainment

- Reliance Smart Point 1 Km
- Patel R Mart 1 Km
- Digi 1 1 Km
- Vijay Sales / Mr. DIY 2.4 Km
- Max Store 2.4 Km
- Croma 2.9 Km





# VED Heights

Sahyadri Chowk, Badlapur (E)

Contact Us :

**72497 99411 / 89282 75500**

ARCHITCT :  
**RAJ & ASSOCIATES**

PROJECT BY :  
**OM REALITY**

R.C.C. CONSULTANT :  
**S.V. PATEL & ASSOCIATES**

**Rera Disclaimer:** The project is registered under MahaRERA registration RERA No **P51700049586** and is available on the website <https://maharera.mahaonline.gov.in> under registered projects.

**Privacy Policy:** We collect information from you when you register on our site or fill out a form. When filling out a form on our site, for any of the above-mentioned reasons, you may be asked to enter your: name, e-mail address and phone number. We may get back to you via email, SMS, Whatsapp or Call. You may, however, visit our site anonymously. Any of the information we collect from you is to personalize your experience, to improve our website and to improve customer service. "Any data collected will be/ will not be shared with any 3rd party" in the privacy disclaimer section.

Disclaimer



RERA No **P51700049586**

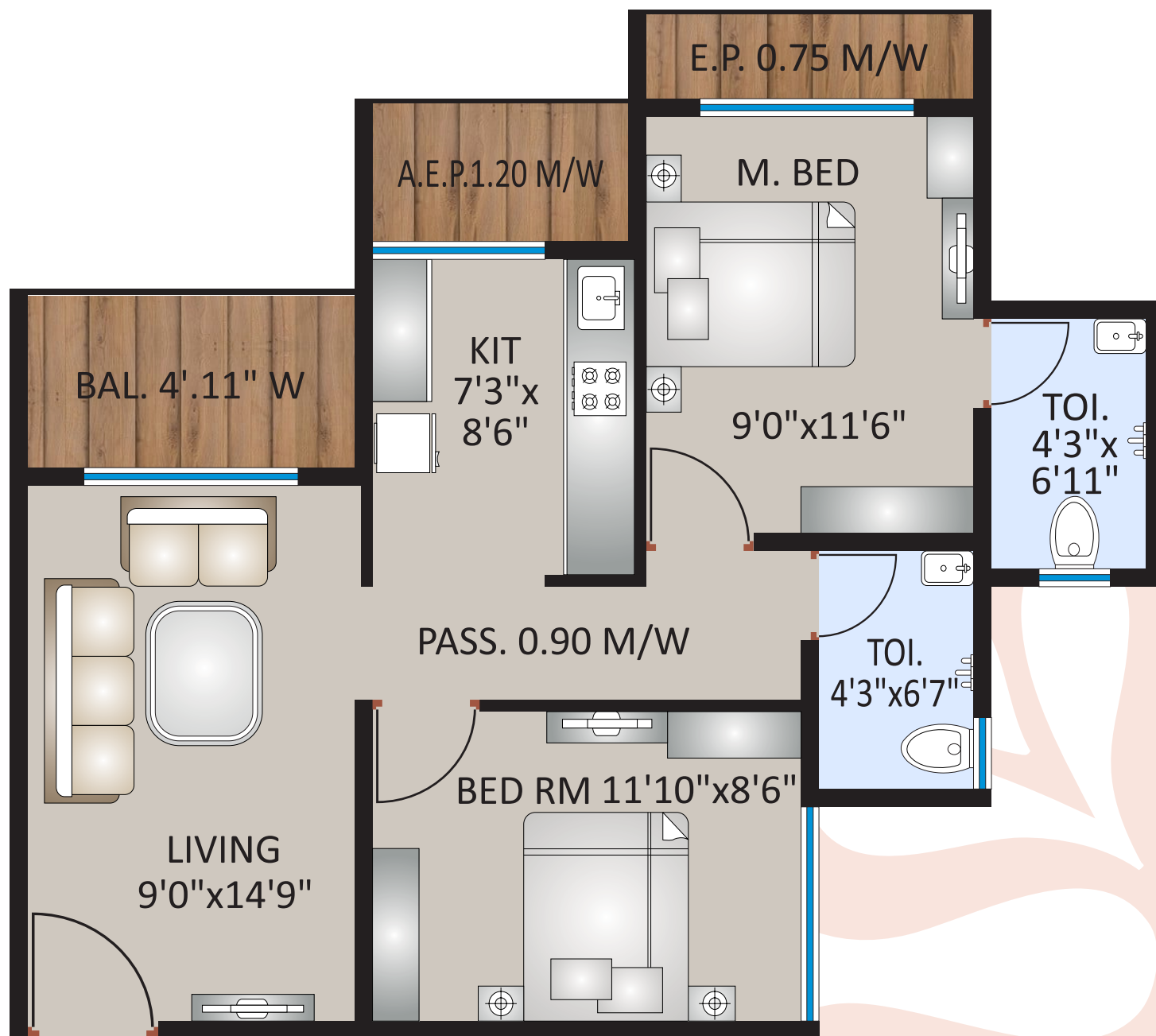
Ved Heights, Sahyadri Chowk,  
Near Konark Garden,  
Badlapur Panvel Highway,  
Shirgaon, Badlapur East : Pin - 421 503

**Info@vedgroup.co**  
**www.vedgroup.co**

Note: This brochure is purely conceptual and not a legal offering. The Promoter / Architects reserve the right to add / alter any detail / specification / elevation mentioned here in. The brochure is indicative of how the furniture can be arranged in the flat. No furniture of any nature is to be supplied to the flat purchaser by the developer

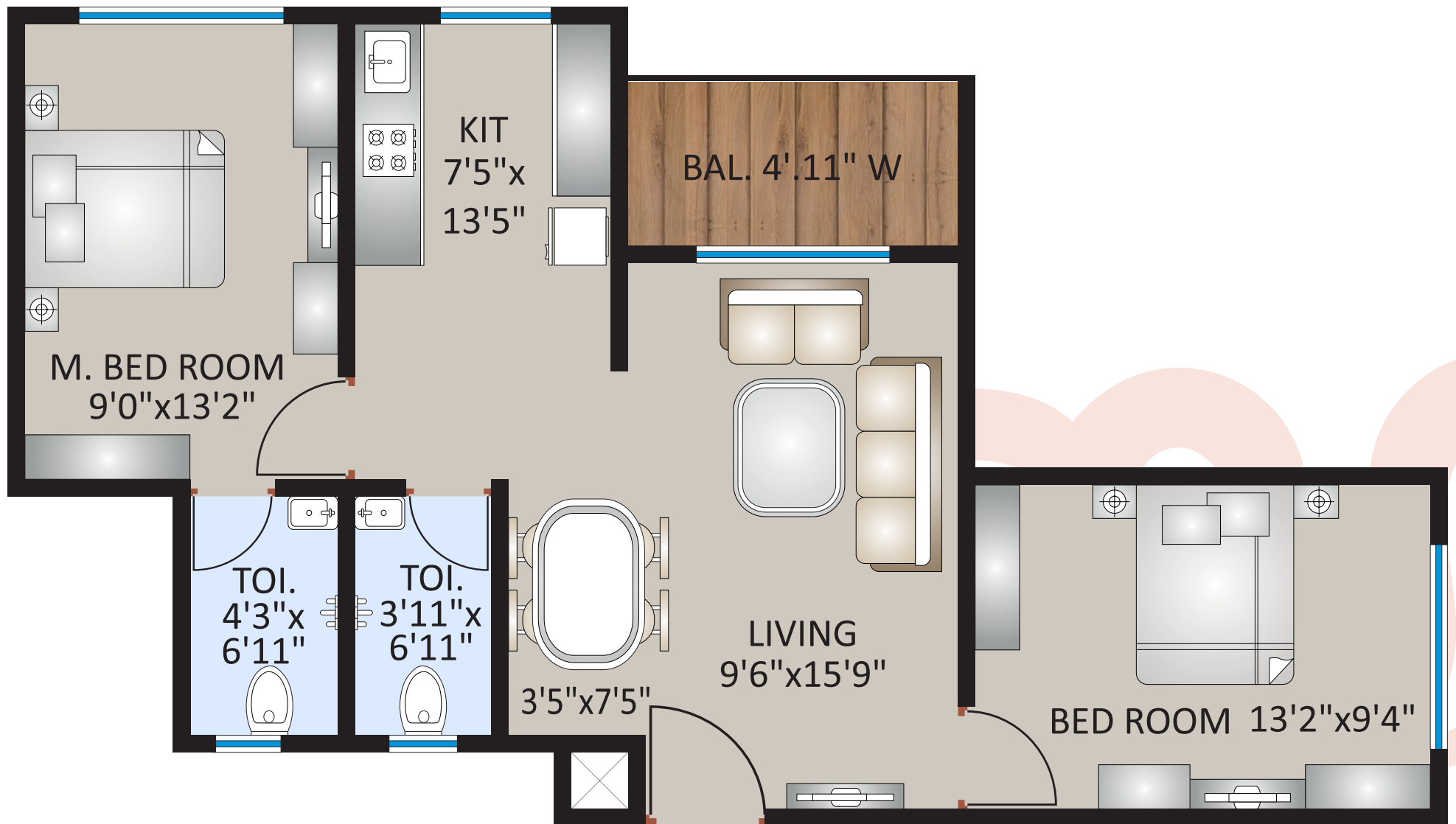
# 2BHK

Usable Area : 625sq.ft.



# 2BHK

Usable Area : 645sq.ft.



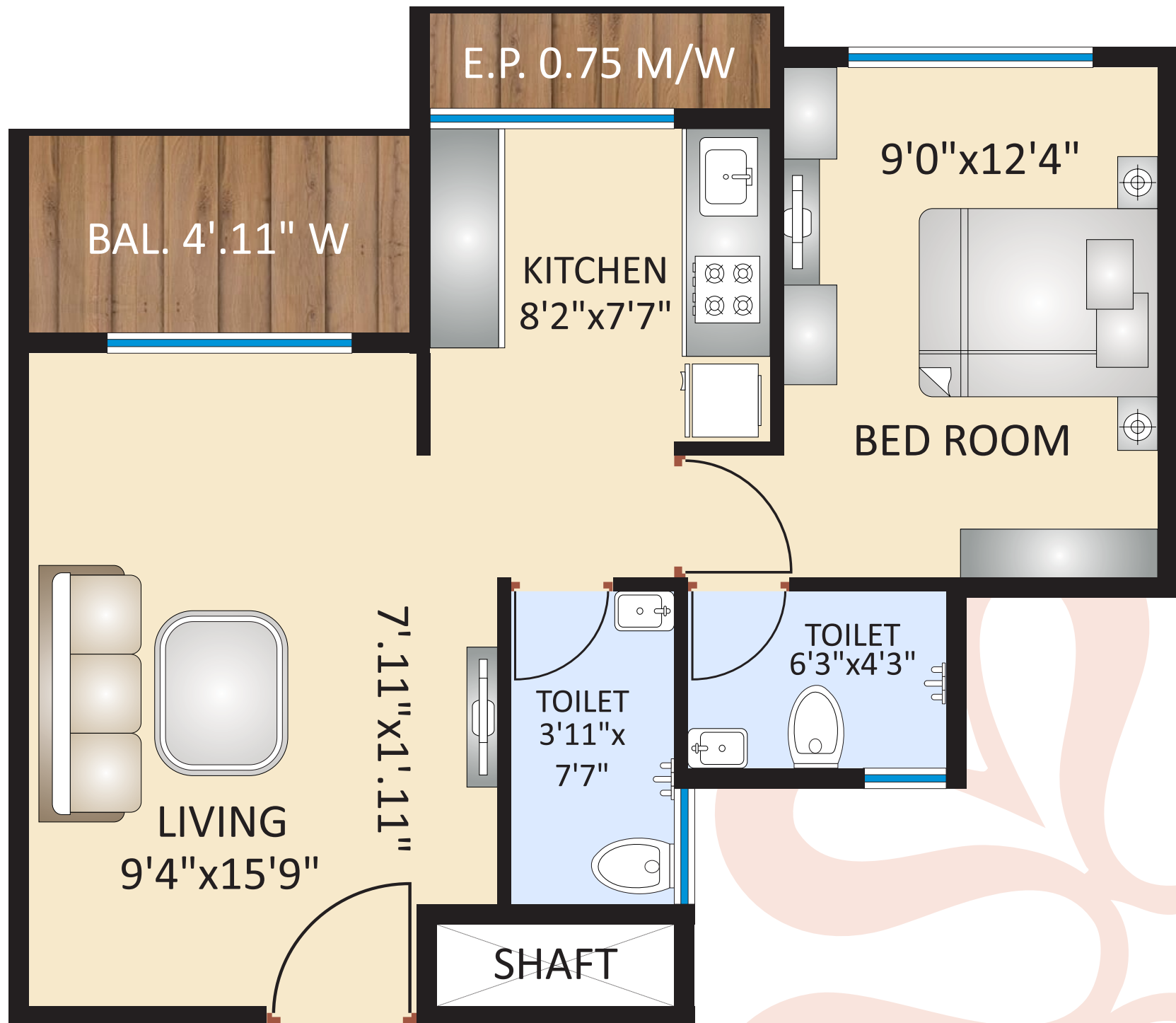
# 2BHK

Usable Area : 720sq.ft.



# 1BHK

Usable Area : 500 sq.ft.



# Bigger Homes, Better Views



Contact : 72497 99411 / 89282 75500

Ved Heights, Sahyadri Chowk, Near Konark Garden, Badlapur Panvel Highway, Shirgaon, Badlapur East, 421 503

**Rera Disclaimer:** The project is registered under MahaRERA registration RERA No **P51700049586** and is available on the website <https://maharera.mahaonline.gov.in> under registered projects.

**Privacy Policy:** We collect information from you when you register on our site or fill out a form. When filling out a form on our site, for any of the above-mentioned reasons, you may be asked to enter your: name, e-mail address and phone number. We may get back to you via email, SMS, Whatsapp or Call. You may, however, visit our site anonymously. Any of the information we collect from you is to personalize your experience, to improve our website and to improve customer service. "Any data collected will be/ will not be shared with any 3rd party" in the privacy disclaimer section.

Disclaimer



RERA No **P51700049586**

  
**VED**  
Heights  
Sahyadri Chowk, Badlapur (E)

PROJECT BY :  
**OM REALITY**

Note: This brochure is purely conceptual and not a legal offering. The Promoter / Architects reserve the right to add / alter any detail / specification / elevation mentioned here in. The brochure is indicative of how the furniture can be arranged in the flat. No furniture of any nature is to be supplied to the flat purchaser by the developer

[www.vedgroup.co](http://www.vedgroup.co)